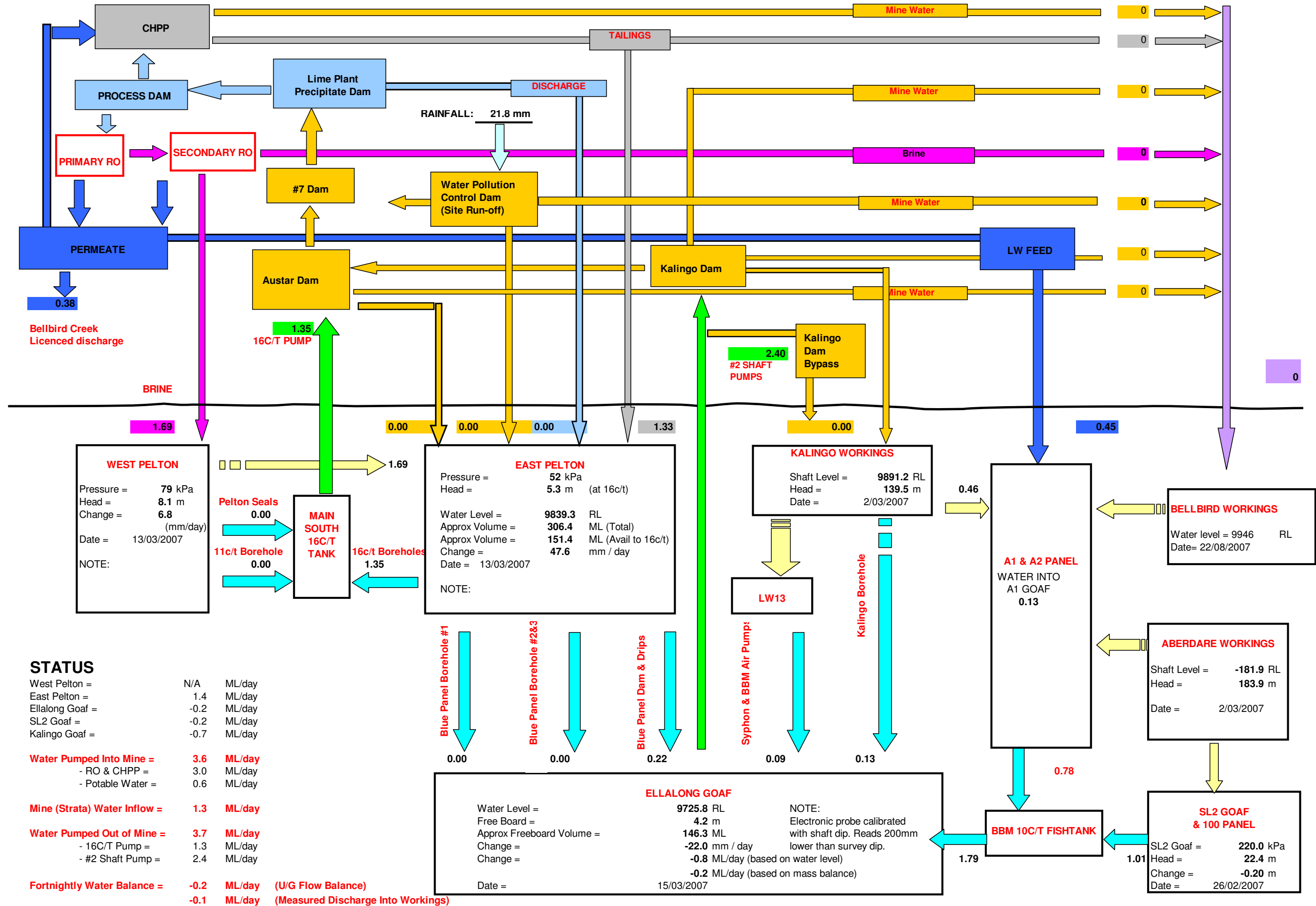




FIGURE 4: DAILY AVERAGE AUSTAR COAL MINE WATER BALANCE SUMMARY (ML / day)

From 5/03/2007 to 19/03/2007



STATUS

West Pelton =	N/A	ML/day
East Pelton =	1.4	ML/day
Ellalong Goaf =	-0.2	ML/day
SL2 Goaf =	-0.2	ML/day
Kalingo Goaf =	-0.7	ML/day

Water Pumped Into Mine =	3.6	ML/day
- RO & CHPP =	3.0	ML/day
- Potable Water =	0.6	ML/day

Mine (Strata) Water Inflow =	1.3	ML/day
-------------------------------------	------------	---------------

Water Pumped Out of Mine =	3.7	ML/day
- 16C/T Pump =	1.3	ML/day
- #2 Shaft Pump =	2.4	ML/day

Fortnightly Water Balance =	-0.2	ML/day	(U/G Flow Balance)
	-0.1	ML/day	(Measured Discharge Into Workings)

ELLALONG GOAF

Water Level = 9725.8 RL
 Free Board = 4.2 m
 Approx Freeboard Volume = 146.3 ML
 Change = -22.0 mm / day
 Change = -0.8 ML/day (based on water level)
 Change = -0.2 ML/day (based on mass balance)
 Date = 15/03/2007

NOTE: Electronic probe calibrated with shaft dip. Reads 200mm lower than survey dip.

WEST PELTON

Pressure = 79 kPa
 Head = 8.1 m
 Change = 6.8 (mm/day)
 Date = 13/03/2007

NOTE:

EAST PELTON

Pressure = 52 kPa
 Head = 5.3 m (at 16c/t)
 Water Level = 9839.3 RL
 Approx Volume = 306.4 ML (Total)
 Approx Volume = 151.4 ML (Avail to 16c/t)
 Change = 47.6 mm / day
 Date = 13/03/2007

NOTE:

KALINGO WORKINGS

Shaft Level = 9891.2 RL
 Head = 139.5 m
 Date = 2/03/2007

A1 & A2 PANEL

WATER INTO A1 GOAF 0.13

BELLBIRD WORKINGS

Water level = 9946 RL
 Date = 22/08/2007

ABERDARE WORKINGS

Shaft Level = -181.9 RL
 Head = 183.9 m
 Date = 2/03/2007

SL2 GOAF & 100 PANEL

SL2 Goaf = 220.0 kPa
 Head = 22.4 m
 Change = -0.20 m
 Date = 26/02/2007