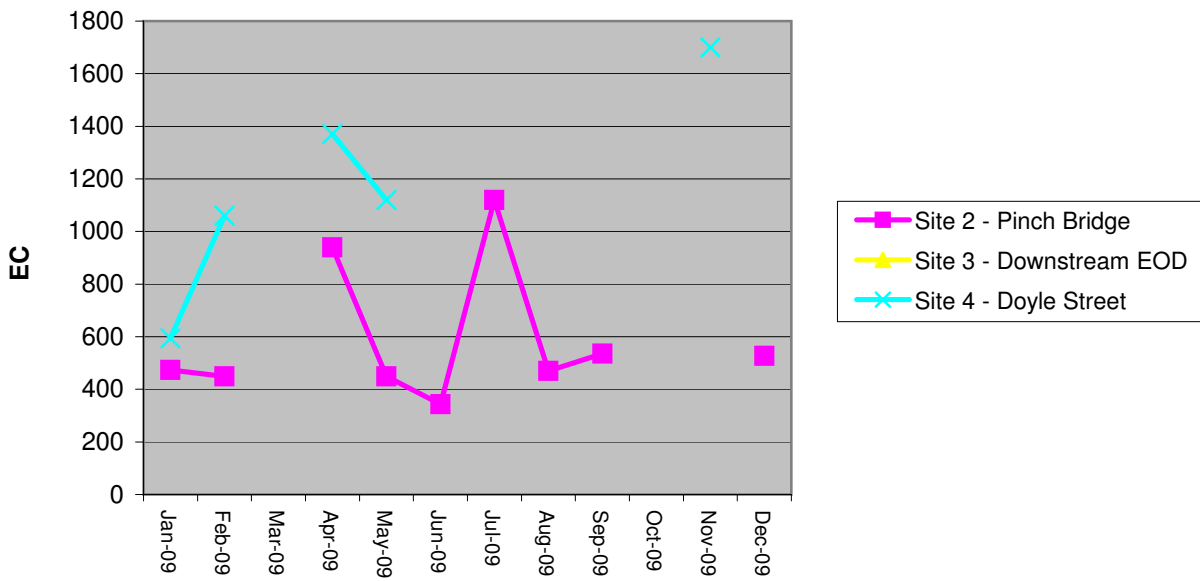
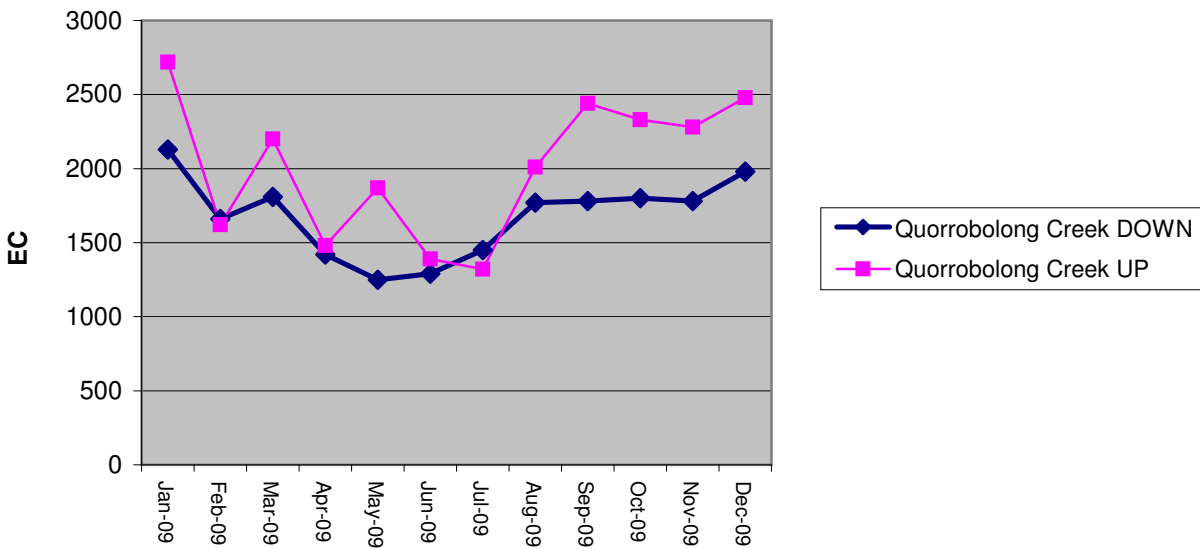


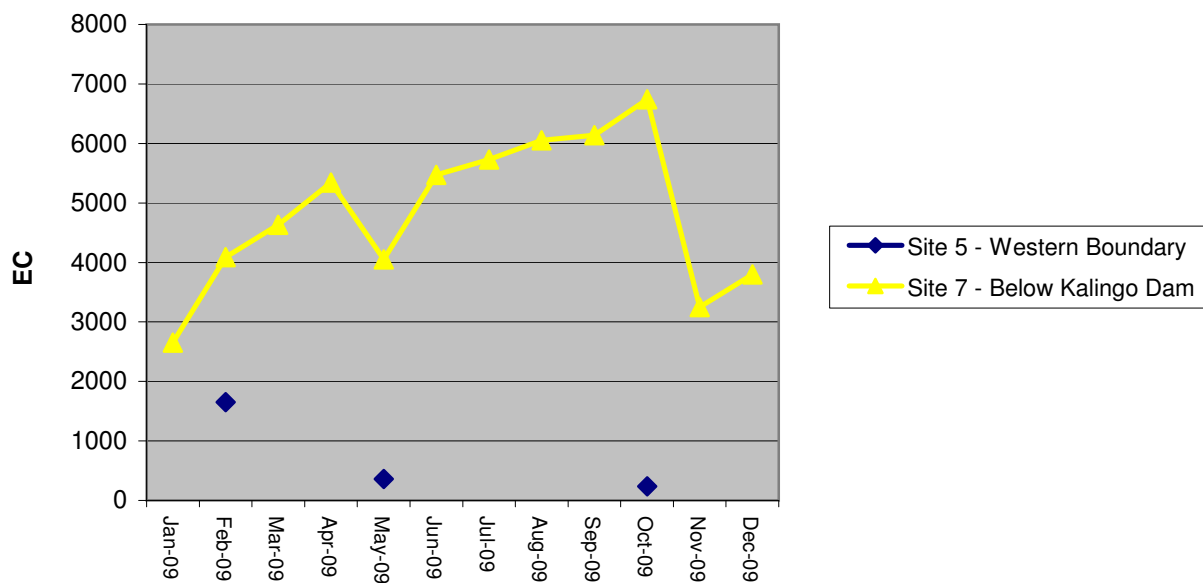
**Surface Water Sites 2,3 and 4
EC (uS/cm) - 2009**



**Surface Water Sites
Quorrobolong Creek Up and Down
EC (uS/cm) - 2009**



**Surface Water Sites 5 and 7
EC (uS/cm) - 2009**



**Surface Water Sites 1 and 6
EC (uS/cm) - 2009**

